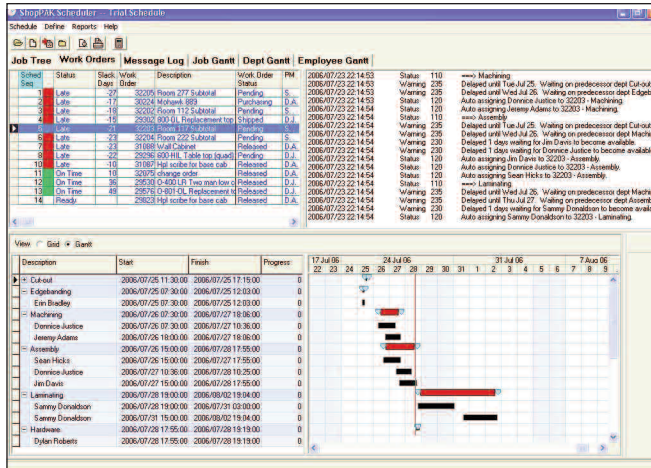


# SHOPPAK® Scheduler

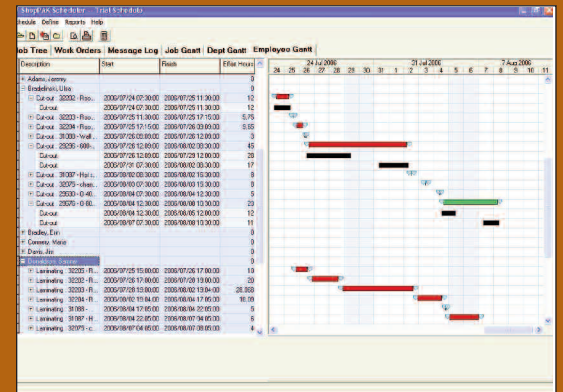


WORK ORDER STATUS

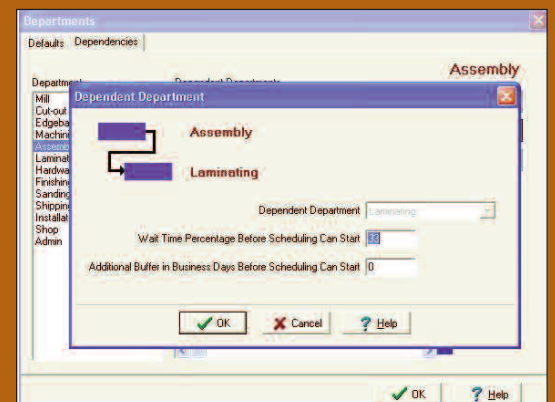
CREATING A SCHEDULE  
SHOULDN'T TAKE LONGER  
THAN FABRICATING  
THE JOB

## FAST

The Scheduler is tightly integrated with the rest of ShopPAK. Jobs, work orders, estimated hours, percent complete, material status, and shifting priorities automatically flow into the Scheduler - eliminating redundant data entry. This saves time and reduces errors. Moreover, the Scheduler runs lightning fast. Change overtime, priority, or resource assignments, click the Schedule Button, and away it goes. Within minutes or less, the Scheduler re-calculates the entire schedule using the best resources based on availability and due date.



EMPLOYEE GANTT



DEPARTMENT DEFINITION

# SHOPPAK®

## Scheduler

FAST  
ACCURATE  
EASY

Department	Choice	Delay Threshold In Days Before Choosing Backup	Backup Productivity Penalty	Daily Shift Min	Daily Shift Max
Mill	Never			1	2
Cut-out	Primary			1	1
Edgebanding	Backup	1		1	1
Machining	Primary			2	2
Assembly	Primary			2	3
Laminating	Never			1	1
Hardware	Never			2	3
Finishing	Never			1	1
Sanding	Never			1	4
Shipping	Never			1	1
Installation	Never			1	1
Shop	Never			1	1
Admin	Never			1	1

SKILLS TABLE

Start Date	End Date
August 21 2006	August 25 2006
December 18 2006	December 27 2006

CALENDAR

### Accurate

The Scheduler doesn't guess when a job will finish.....it knows. Multiple calendars can be created for different resource groups, and by using these calendars, the Scheduler knows which resource is available or booked for every time segment. It allows users to "nail" previously scheduled work orders that meet ship dates so they don't get re-scheduled. This reduces resource availability for the remaining "un-scheduled" jobs, pushing their ship dates further out in the future. If these are lower priority jobs, that's fine. If not, you'll need to re-shift priorities or run overtime and re-run the Scheduler.

### Easy

Traditional project management packages are hard to learn and don't really address the changing priorities of a job shop. Our Scheduler offers the right balance between powerful scheduling capabilities and ease of use. It automatically assigns the best resource to work orders based on priority and resource availability. As the Scheduler assigns resources and calculates start and finish dates, it produces a log that makes finding and fixing bottlenecks easy. And since the Scheduler automatically generates several Gantt views, it's easy to present the schedule in different ways to different groups. When you are satisfied with the trial schedule, the Scheduler automatically creates the Master Production Schedule, updating all Job and Job related scheduling dates.



3225 Shallowford Road  
Suite 330  
Marietta, GA 30062  
800-289-6326  
770-579-9096

www.tradesoftinc.com  
sales@tradesoftinc.com