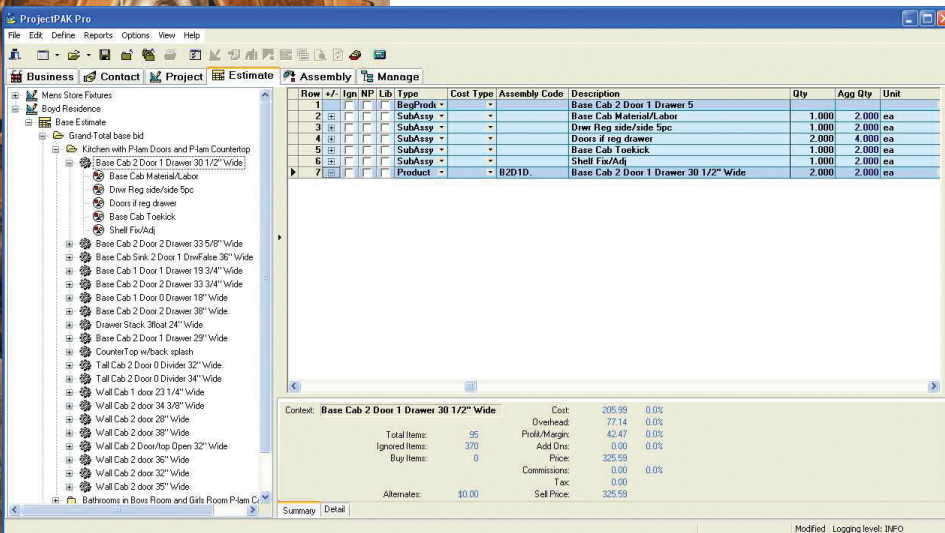


WHAT'S MORE IMPORTANT THAN ACCURATE ESTIMATING?

Project **PAK®**

ESTIMATING IS THE LIFE BLOOD OF EVERY CUSTOM MANUFACTURER.

Indeed, accurately estimating jobs in a timely manner dictates success or failure. Nobody appreciates this more than TradeSoft. For more than 15 years, we've provided custom fabricators with a powerful estimating solution called **ProjectPAK**. We're proud that **ProjectPAK** has helped our clients improve accuracy, while at the same time, speed estimating so they bid and win more jobs. Built with powerful database technology from Sybase, **ProjectPAK** gives estimators a comprehensive tool for taking off jobs, estimating cost, generating quotations, and managing the entire process.



- Job tree keeps large, complex jobs organized
- Drag and drop assemblies and library items on to takeoff sheet
- Explicit support for Alternates and Change Orders
- Swap out materials to match job specifications
- Adjust labor curving factors to match job size
- Automatically calculate shipping and freight charges
- LEED compliance reporting
- RFI and Transmittal generation
- Notes, reminders, and contact management
- Built-in spell checker
- Highly customizable documents and reports
- Extensive, pre-built commercial and residential casework databases

UNMATCHED POWER and FLEXIBILITY

You won't find another estimating tool that conforms to your needs like **ProjectPAK**. Produce 'quick and dirty' budget quotes. Estimate using lineal foot or any other unit of measure. Break items down into their underlying labor and material. Use parametric formulas to dynamically calculate material and labor based on variable product attributes such as height, width, depth, etc. Create relationships between material and labor using labor factors. Set up dynamic job specifications using our Product Configurator to quickly bid jobs based on their specific material and construction needs. Create custom 'one off' items directly on the estimate sheet.

"Estimating is where I make or lose money. For the first time, I'm able to delegate estimating responsibility to others in my company with confidence."

Bruce Spitz
Classic Millwork and
Products, Inc.

TradeSoft INC

Copyright © 2010 TradeSoft, Inc. All rights reserved.
ProjectPAK and ShopPAK are trademarks of TradeSoft, Inc.
All other trademarks are the property of their respective owners.



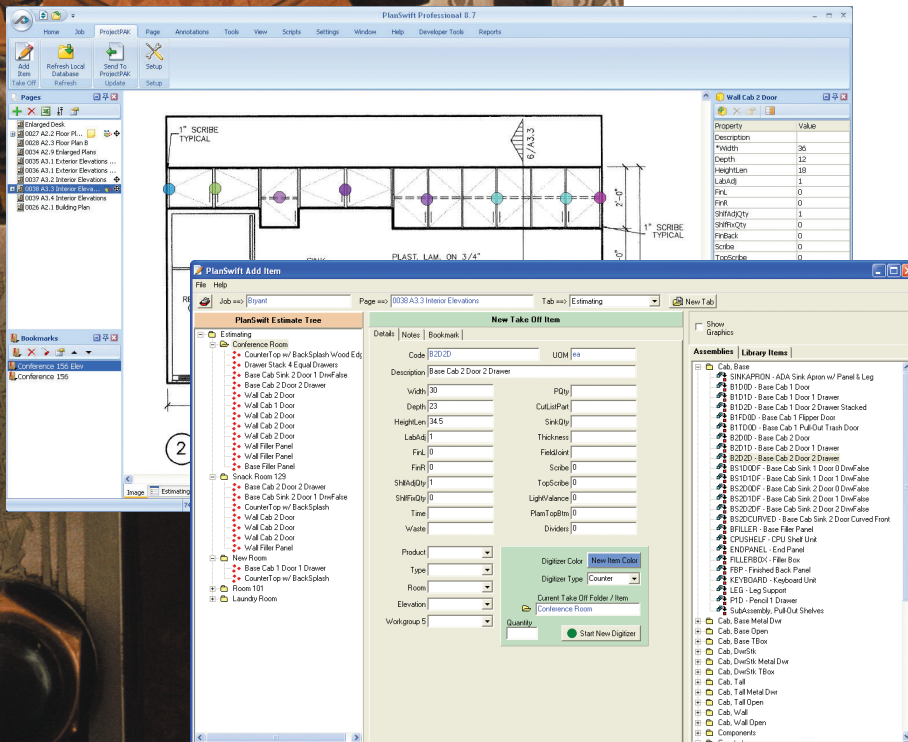
Part of TradeSoft's Total Manufacturing Solution

ProjectPAK can be used as a stand-alone estimating workbench. However, it is part of a comprehensive software solution that drives your entire operation. It works seamlessly with ShopPAK, our powerful job costing, tracking, and management package. With a click of your mouse, ShopPAK automatically creates a first-cut job complete with job items, work orders, labor budgets, material needs, and product list based on a ProjectPAK estimate.

We've also integrated ProjectPAK with PlanSwift, the #1 digital takeoff software available today.

With our PlanSwift Plug-In, you can take off items directly from the shared ProjectPAK assembly and library database while working in PlanSwift. As items are taken off, they are color-coded and accounted for. A great feature is automatically highlighting differences between the original and revised plans. When finished, automatically transfer the PlanSwift takeoff into ProjectPAK.

Working with digitized plans instead of paper plans saves time and money. Seamlessly sharing data between ProjectPAK and PlanSwift speeds estimating and improves accuracy.



"Before ProjectPAK, I bid 15-25 jobs a month totaling \$750,000. Now, I routinely bid 60 - 80 jobs totaling 2-3 million and my accuracy is dead on."

Glenn Stevens
Woodwrights, Inc.

"We have 4 people estimating, averaging \$1,000,000 a week in estimates. We could not do this by hand, or achieve the same level of accuracy, without ProjectPAK."

Mark Ramsey
Tahiti Cabinets, Inc.

TradeSoft^{INC}

front to back...we've got you covered!™

3225 Shallowford Rd.
Suite 330
Marietta, GA 30062
800-289-6326
770-579-9096

