
*** PC Based Shop Floor Data Collection 4.5.1 ***

Version 4.5.1 requires you update ONLY your shop floor data collection workstations. The shop floor data collection controller has not changed.

For this release, you simply update your shop floor data collection workstations with the new executable. This update does not require that your employees CLOCK OUT prior to shutting down the old workstation software and copying the new PC Data Collection software executable on to your data collection workstations.

*** PC Data Collection Workstation 4.5.1 ***

- 1) Go to our web site --> www.tradesoftinc.com
- 2) Click the Support Link at the top of the home page.
- 3) Click the "Click here to logon in" in the top right area of the page under Registered Users.
- 4) To access the Support page, use the logon --> **member** and password --> **ppak**.
- 5) On the Support page, click the Shop Floor Data Collection Downloads link at the left, or the PCDC Data Collection 4.5.1 link at the top right of the page.
- 6) On the Shop Floor Data Collection Downloads page, click the " PC Data Collection Workstation 4.5.1 Update" link to download the PC Data Collection Workstation 4.5.1 installer.

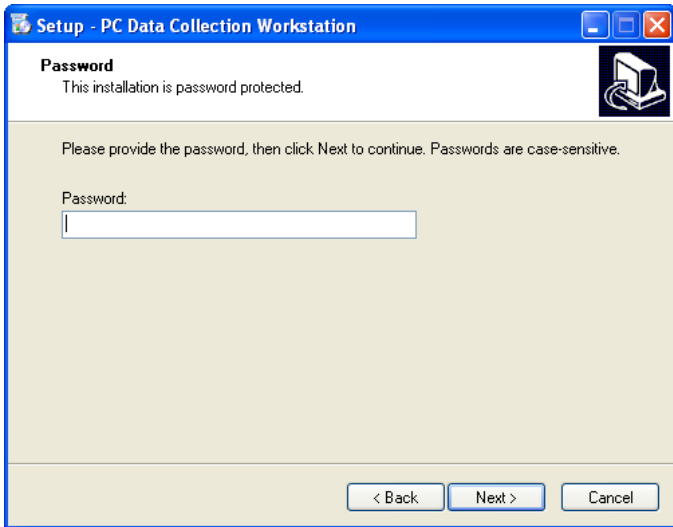
*** PC Data Collection Workstation 4.5.1 ***

On the machines where you have the PCDC Workstation installed:

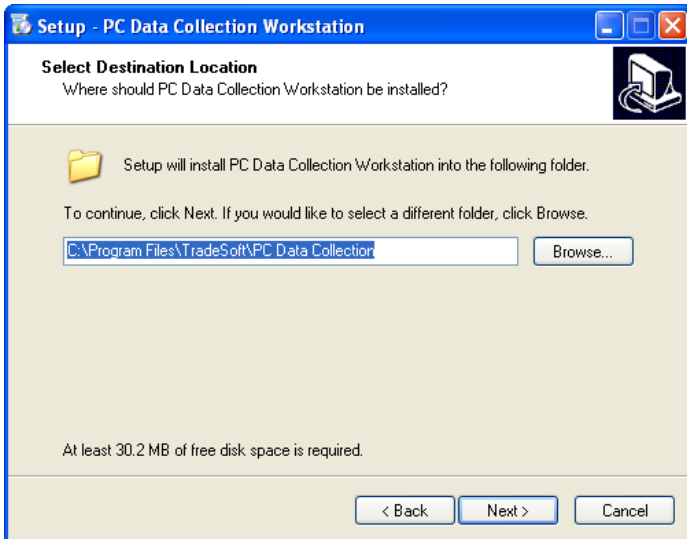
- 1) Download the PCDC Workstation 4.5.1 Upgrade.exe file to your PC. Choose "Save To Disk."
- 2) Once downloaded, double-click the file. This starts the installer.

Note: If you are running Windows Vista or Windows 7, 8, 10 we recommend that you start the installation program by right-clicking on it and choosing the Run As Administrator command.

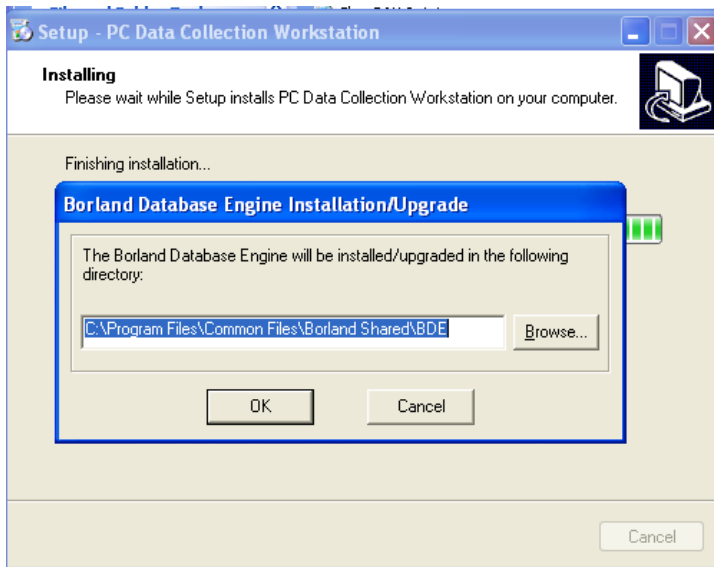
- 3) This update is password protected. Contact the TradeSoft help desk at support@tradesoftinc.com for the password and then enter it in lower case then click Next.



- 4) As long as you kept the default install directory for PCDC Workstation, you can click the Next button on the following section. If you have installed PCDC Workstation somewhere else besides the default directory, then you'll need to click the Browse button and locate the proper directory.



- 5) In the next section, click **Install** to start the installation process. During this process, you will be prompted with the window below:



Click OK to finish the installation.

- 6) Start the PC Data Collection Workstation program by going to Start | Programs | ShopPAK | PC Data Collection Workstation.